

PRAIRIE COLLEGE



Celebrating 100 Years
of God's Faithfulness

2022
ANNUAL REPORT

SEVEN STRATEGIC INITIATIVES

Seven Strategic Initiatives that are setting the course for the College for the next century: to continue impacting nations.

We need to continue to build and model a healthy Christian community on campus, and send missional grads who are well educated, biblically and academically, prepared to live sacrificially to build God's Kingdom.

WHAT WE'VE DONE:

1. Harmony in Campus Culture

- a) Harmony was needed and lacking.
- b) Priority to exalt above all things His name and His Word – Psalm 138:2
- c) Days of Prayer, weekly staff prayer and student initiated prayer – Psalm 138:3
- d) Shared mission, vision, values, and purpose.
- e) Communication – Monthly Family Meetings.

2. Program Quality: Every program in top quartile

- a) Instructors with credentials and ability to teach well.
- b) International learning experience for every program.
- c) External partner for every program.
- d) Bible/theology – Full coverage of the Canon in 7 courses built into every degree.
- e) Moving PN provider from Bow Valley College to Red Deer Polytechnic.
- f) Relaunch Music & Worship Arts program under Brian Doerksen.

3. Multi-channel Delivery

- a) In-person on campus.
- b) Asynchronous – each student studies online at their own pace in their place.
- c) Synchronous – join in-person campus classes with HyFlex technology.
- d) Prison.



WHAT WE ARE DOING:

4. Bachelor of Education Application
 - a) Launch Academic Council.
 - b) Approve Policy on Equity, Diversity, and Inclusion while maintaining Biblical standards.
 - c) Implement Scholarship Development.
 - d) Define and Protect Academic Freedom.
5. Expand Graduate School Offerings
 - a) Possibly in Business.
 - b) Possibly in Youth.
 - c) Possibly a graduate school to complement undergrad programs.
6. Branding for Marketing and Enrollment
 - a) Build Brand awareness.
 - b) Cohesive messaging.
 - c) Enrollment growth.
7. Capital Campaign: Expanding for Greater Impact
 - a) Steam tunnels fixed, now need to get off central boiler.
 - b) Residence: needs a major renovation.
 - c) Need to tear down 2 buildings, move library into dining room.
 - d) Continue renovation of all buildings.
 - e) New buildings – Aviation Hangar expansion, Dining Room, Welcome/Student Centre, and Worship Centre.
 - f) Technology, team development, and scholarship funding.



Mark L. Maxwell, President



RECAP OF THE CENTENNIAL YEAR

We are grateful for all that the Lord has done here at Prairie College in the last century. He has impacted many lives through Biblical education to prepare young people for careers and ministries. We celebrated a number of milestones this year.

The College wrapped up its 100th academic year in April, 2022.

Nearly 1,000 alumni returned to campus in July for a grand celebration and reconnecting with new and old friends.





The **College's Strategic Plan** was updated to meet its four key goals to fulfill our motto: *to know Christ and make Him known*. Here are some of the activities we are working on:

- Intentional leadership and discipleship training
- Work-integrated learning objectives in all programs
- All programs with international opportunities (internships, practicums, trips)
- 50% increase of programs qualifying for post-graduate work permits
- Increase opportunities to engage with prospective students
- Improve academic program profitability to 15%

Projects completed in the 2022 fiscal year:

- Upgrades to classroom and HyFlex technology.
- HyFlex system at Frontier Lodge, our Outdoor Leadership program partner.
- Renovation of two apartments in Davidson Apartments.
- Prairie Heritage Museum setup for the Centennial.
- Music & Worship Arts keyboard lab setup.
- All of the planes' exterior paint updated.



CAPITAL CAMPAIGN: EXPANDING FOR GREATER IMPACT

While marking our centennial, Prairie began a 5-year, \$100-million-dollar campaign for a fulsome and God-sized plan to grow our campus and equip graduates to impact the nations.

This capital campaign, an investment in Prairie's infrastructure, is **far more than an upgrade of bricks and mortar**. We will continue to create a Christ-centered, biblically founded, faithful educational community and a future network of like-minded graduates.



PATCRAFT OPTIX FACET
17" X 41" I0372 | MIXED MATERIALS CONVERGE COLLECTION PINSTRIPE - MONOLITHIC
INSTALLATION

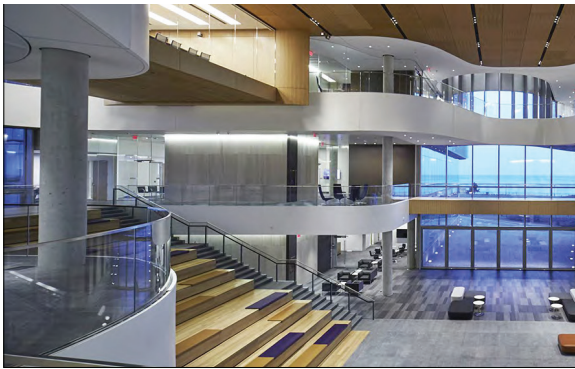


"Prairie College has offered me a new perspective on the world. My ability to think, read, speak, and write, are all owed to the fine staff and faculty here at Prairie, and I wish to continue to learn from them. A Christ centered approach to my learning is integral to my future vocation of working in a Christian education system." - Jesse James

This is a campaign to shape the next generations of godly leaders, who will impact culture because they **know Christ and want to make Him known**.

Vocational training is not sufficient to thrive in the modern world, yet it grants access to careers. **A biblically-grounded worldview equips and catalyzes Prairie graduates to be missional leaders**, who will, in turn, generate a lasting impact for the Kingdom of God wherever life takes them. It is setting them up for success over a 40-year life and career journey.

Campaign priorities:



INVESTMENT IN THE CAMPUS

renovations and new construction



ACCESS TO AFFORDABLE EDUCATION

scholarships and bursaries



NEW GENERATION OF TECHNOLOGY

upgrade technology for educating students on and off campus



PROGRAM DEVELOPMENT

enhance current programs, partnerships, and experiential opportunities

2022 FINANCIALS FOR ANNUAL REPORT

ASSETS

2022

2021

Cash	\$ 1,089,609	\$ 850,469
Accounts receivable	253,761	60,832
Goods and services tax receivable	16,185	16,693
Government assistance receivable	-	128,211
Prepaid expenses	207,369	251,238
Term Deposit	100,000	100,000
Inventory	73,485	65,648
	<hr/> 1,640,409	<hr/> 1,373,091

INVESTMENTS

4,515,288 4,762,593

CAPITAL ASSETS

7,494,680 7,604,537

\$13,650,377 \$ 13,740,221

LIABILITIES

CURRENT

Accounts payable and accrued liabilities	\$ 506,846	\$ 513,719
Government remittances payable	72,869	74,082
Deferred Revenues	632,950	521,472
Current portion of pension liabilities	12,720	12,960
	<hr/> 1,225,385	<hr/> 1,122,233

PENSION LIABILITIES

44,001 47,805

PLANNED GIVING AGREEMENTS

711,550 554,547

1,980,936 1,724,585

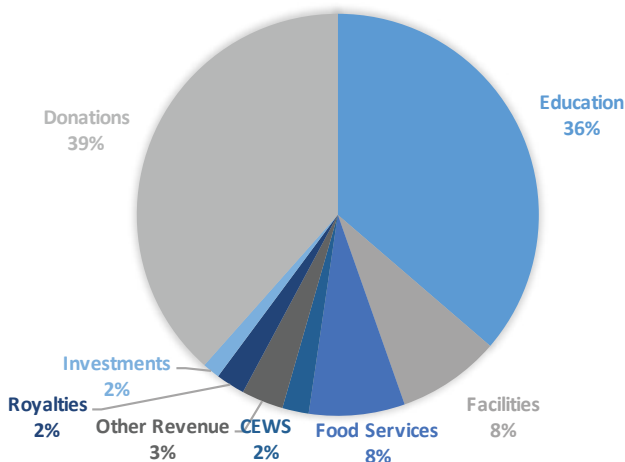
NET ASSETS

Restricted	1,217,962	1,249,824
Restricted for endowment purposes	2,651,294	3,061,582
Invested in capital assets	7,494,680	7,604,537
Unrestricted	305,505	99,693
	<hr/> 11,669,441	<hr/> 12,015,636

\$13,650,377 \$ 13,740,221

REVENUE

\$9,863,410



REVENUE

Education	3,581,349	36%
Facilities	818,212	8%
Food Services	761,166	8%
CEWS	209,823	2%
Other Revenue	332,468	3%
Royalties	230,445	2%
Investments	137,938	2%
Donations	3,792,009	39%
TOTAL	9,863,410	

EXPENSES

Compensation	3,357,729	33%
Programs & Admin	2,722,568	27%
Facility Costs	1,058,979	10%
Food Services	686,366	7%
Scholarships and Bursaries	720,235	7%
Fundraising	338,953	3%
Planned Giving Payments	65,229	1%
Loss on FMV of Investments	783,188	8%
Amortization	476,358	5%

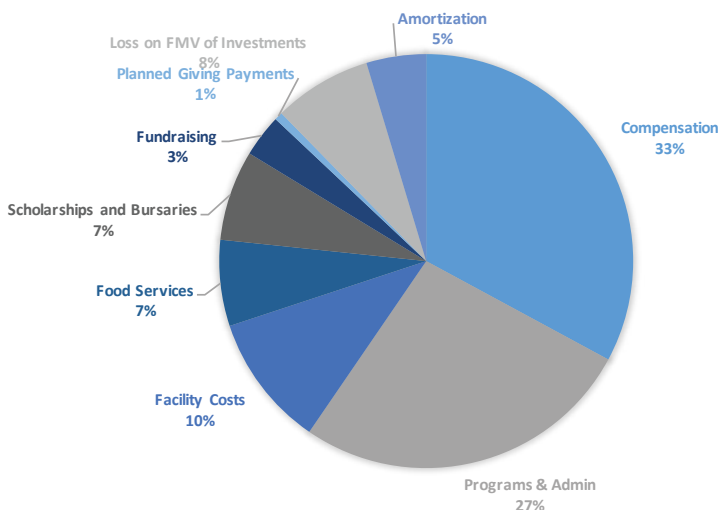
Total **10,209,605**

Net Income (loss)*

-346,195

EXPENSES

\$10,209,605



3: The loss of \$346,195 for the year includes a loss on investments of \$783,188, which is expected to be earned back as markets recover.

2021-2022 STUDENT BODY



TOTAL STUDENTS



ON CAMPUS & HYFLEX



PRISON



ONLINE



GRADUATES

ONLINE EDUCATION

In 2022, students from around the world and across the street took online courses at Prairie College.

In January, we launched the second cohort in the *Master of Leadership in Global Christian Education*. These students joined our first cohort who are currently finishing the program. We plan to have **our first graduation from this program in the spring of 2023**.

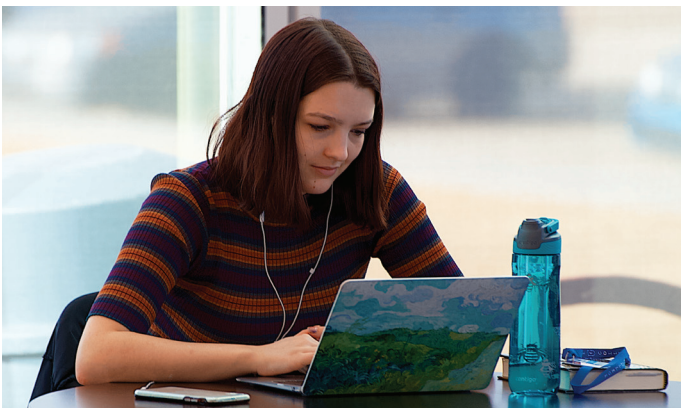
At the undergrad level we **sold 182 online courses**. A variety of students take these courses: on-campus students filling out their schedule; students from other colleges or universities; or our Online Education program students.

Prairie continues offering HyFlex classes and will keep providing this new option for students in the future. Approximately **11% of the student body in the 2022–2023 year is enrolled in HyFlex courses**, with that number anticipated to grow over time.

Prior to the pandemic, students had two choices for course delivery options i) traditional in-person attendance, or ii) online asynchronous courses taken individually (in your place at your pace). Prairie students now have this third synchronous attendance option with a live class by HyFlex.

Our HyFlex delivery method has benefitted students far beyond our campus borders, to date successfully reaching students in Canada and those in five (5) other countries including Brazil, Great Britain, Nigeria, Uganda, and the United States (US). Students studying through our Online Education department include those in Canada as well as Australia, Philippines, India, South Korea, Uganda, Nigeria, Thailand, and the US.

We continue to develop our online courses to provide Prairie students with a variety of options on their academic journey.



"Through my career and education, I hope to better equip the people of the church to be better readers of Scripture. I have found such joy in studying the Bible and hope to impart that joy to the people I will be working with."
- Adriana

ON-CAMPUS EDUCATION

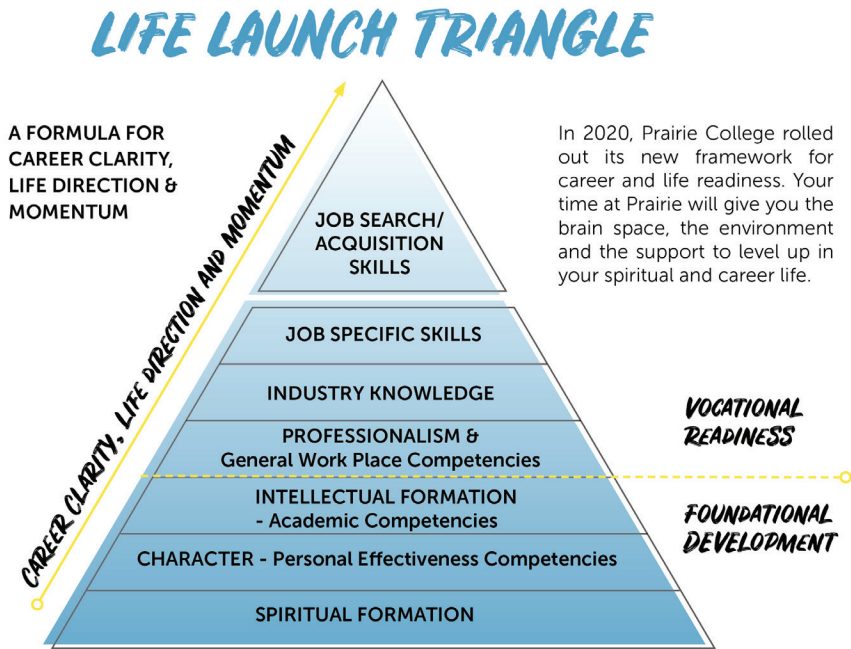
The goal of education and life transformation is the same no matter how any student happens to “attend” class. Consequently, Prairie College continues to improve its HyFlex classrooms (eight in total) for increased flexibility for professors as they plan and teach their lessons and for increased connection among online and on-campus students.



In February, Prairie received re-accreditation approval for the next ten years from **Association for Biblical Higher Education**. Our membership allows us to grant certificates, diplomas, and degrees; as well, to transfer with other ABHE post-secondary schools in Canada and the USA.

Prairie College continues to work through the process of applying to offer a *Bachelor of Education*. We are in the organizational review stage and anticipate a site visit in early 2023. **Please join with us in prayer for God’s will to be accomplished with this program.**

This Fall, to continue to meet the goal of vocational discipleship through our “Life Launch” model, we launched the Career and Calling office to assist students in their next steps after graduation. They can receive assistance with resume writing, interview skills, personality and job surveys, and job applications.



In 2020, Prairie College rolled out its new framework for career and life readiness. Your time at Prairie will give you the brain space, the environment and the support to level up in your spiritual and career life.

This year, the College welcomed these new members to Prairie’s excellent cadre of faculty.



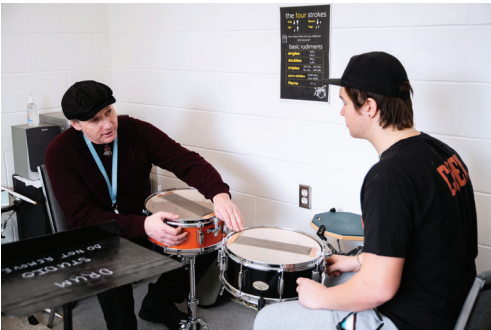
Dr. Gary Schmidt directs and teaches in the Business program. Gary moved to Three Hills from British Columbia and his most recent work at Trinity Western University.



Humberto Vargas, coming from Calgary, began this past year in the Music and Worship Arts program. He has a master’s degree in conducting and has conducted the choir and symphony at First Alliance Church in Calgary.



Bob Murray also joined Prairie College as the Athletic Director as well as Program Director for the Sports Management program. He brings years of experience in this field.



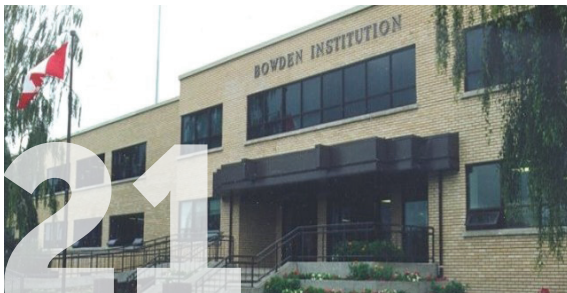
EDUCATION IN PRISON

The long awaited return to the prison classroom, after the pandemic, became a reality in the last half of 2022. This return was not without its complications. COVID protocols have actually changed several of the volunteer policies permanently. In some institutions, our program had to be completely resubmitted for approval and our volunteers reoriented. This took quite a bit of time, but at present, all four classes in Drumheller and Bowden have resumed. The last class to resume in Bowden was on January 12, 2023.

Our program at the Edmonton Institution ("Edmonton Max") is now operated completely over **closed circuit TV**. This means that participants there access our programming through a TV monitor that receives the broadcast in their cell. A learning facilitator then follows up with the students' right on the units on a weekly one-on-one basis. This delivery model was implemented as an alternative to classroom instruction during COVID, but it has turned out to be a **much more effective way of delivering our program** there.

We are taking steps to establish the program in Grande Cache Institution where the program has been approved, and we already have 22 inmates that have applied to be enrolled in the program there. When we successfully recruit a learning facilitator similar to our program in Edmonton, our program can begin in Grand Cache. **Please pray for a local facilitator.**

Currently, we have 21 students enrolled in Bowden institution; 17 students enrolled in Drumheller Institution; 26 students enrolled in an audit program in Edmonton Institution and 22 students in the queue in Grand Cache.



STUDENTS



STUDENTS



AUDIT STUDENTS



QUEUED STUDENTS



PROUDLY PARTNERED WITH:



prairie.edu
Box 4000
Three Hills, AB T0M 2N0
alumni@prairie.edu
403.443.5511